



Empowering Tomorrow's AI Computing

ECM-6121

COM-Express Type6 Core Module

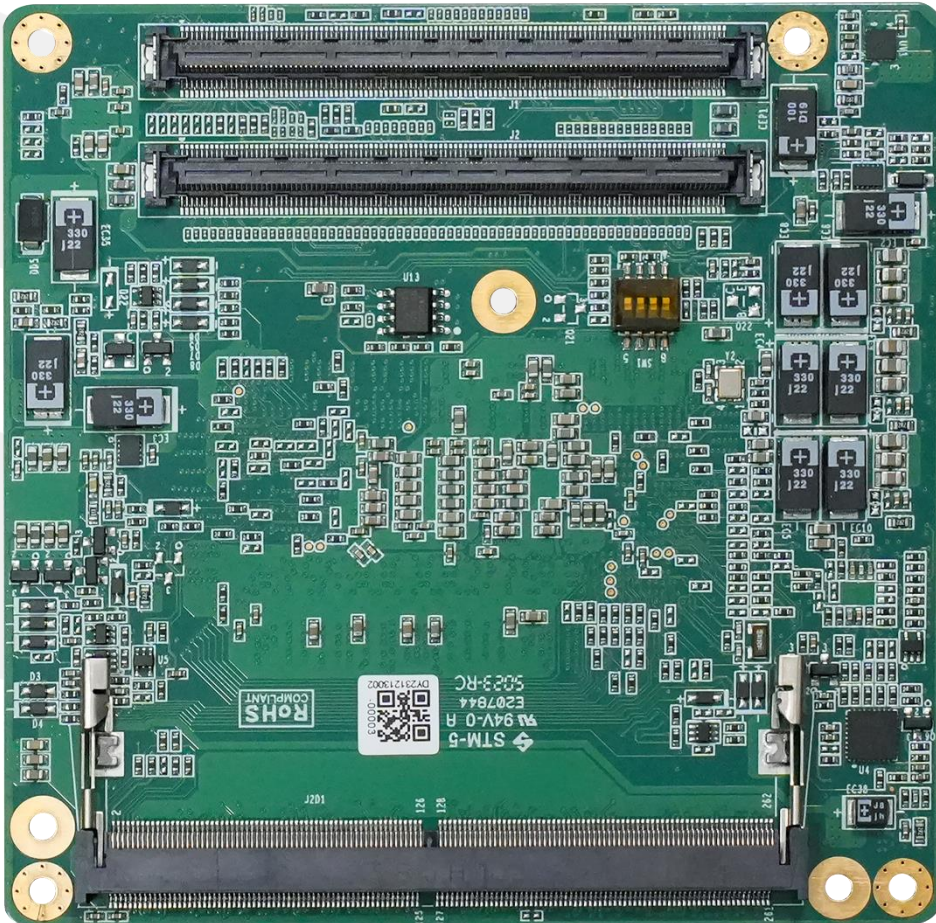
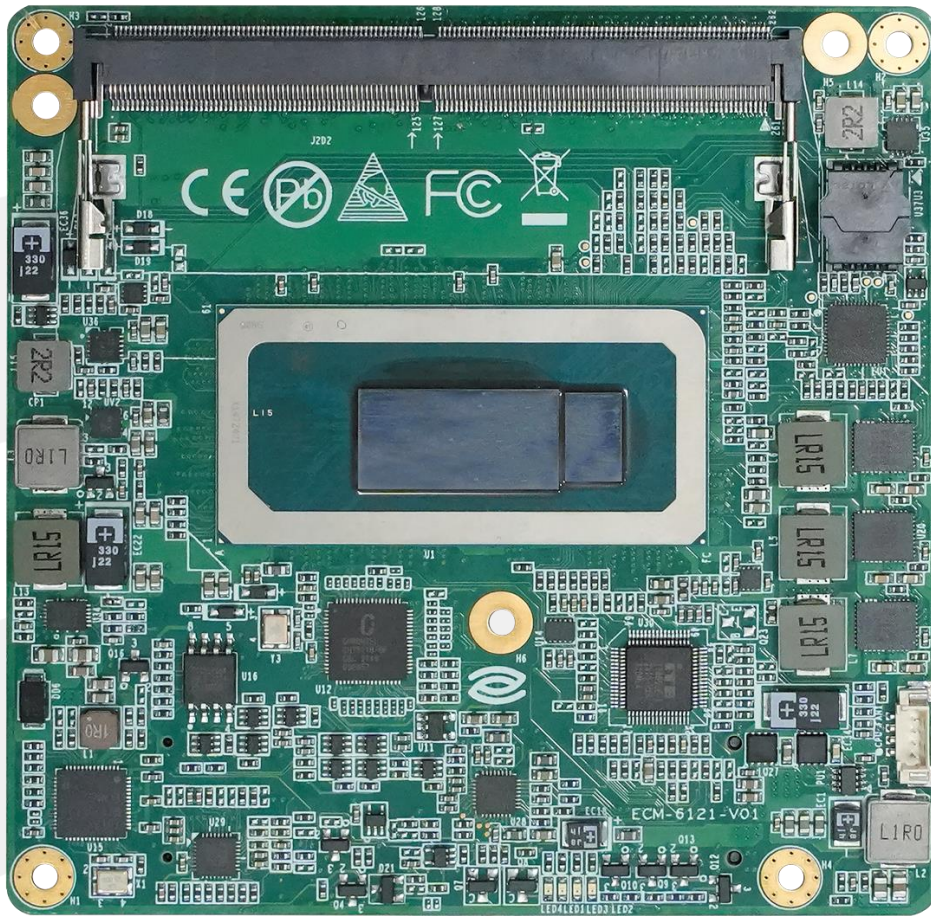
Product Catalogue

1. Specifications

| Model | | ECM-6121 | | | | |
|--------------------------------|---------------------------------|--|-----------|-----------|----------|----------|
| 产品类型 Form Factor | 产品类型 Form Factor | COMe Type6 Core Board | | | | |
| 处理器 Processor System | 处理器 CPU | 7305E | i5-1250PE | i5-1350PE | i7-1360P | i3-1315U |
| | 内核数 Core Number | 5C | 12C | 12C | 12C | 6C |
| | 线程 Total Threads | 5T | 16T | 16T | 16T | 8T |
| | 最高主频 Max. Speed | 1.0GHz | 4.4 GHz | 4.6 GHz | 5.0 GHz | 4.5GHz |
| | 二级缓存 L2 Cache | 8M | 12M | 12M | 18M | 10M |
| | 功耗 TDP (W) | 15W | 28W | 28W | 28W | 15W |
| | BIOS | AMI UEFI 256 Mbit | | | | |
| 扩展插槽 Expansion Slot | PCI Express | PEG: PCIe Gen4, 12 lanes (H series), Bitfurcate to 1 x8 PEG: PCIe Gen4, 4 lanes (P/U series), Bitfurcate to 1 x4 PCIe: PCIe Gen3, 8 lanes max up to 6 end devices, Default 5 lanes (5 x1, 2 x2 + 1 x1), Option 2 x4, 1 x4 + 2 x2 (Co-lay with SATA & Ethernet) | | | | |
| 内存 Memory | 规格 Technology | DDR5 Non-ECC | | | | |
| | 最大容量 Max. Capacity | 64G 4800MH/s | | | | |
| | 插槽 Socket | 2 x SO-DIMM | | | | |
| 显示 Display | 最多显示 Multiple Display | 4 Ports | | | | |
| | 控制器 Controller | LVDS Dual Chanel(Optional eDP) 3 x DDI configurable HDMI/DisplayPort | | | | |
| | 分辨率 Resolution | LVDS:1920*1200@60Hz HDMI2.0b:4096*2160@60Hz 24bpp DP1.4a:4096*2304@60Hz 36bpp eDP:4096*2304@60Hz 24bpp | | | | |
| 以太网 Ethernet | 控制器 Controller | Intel®I225-AT | | | | |
| | 速度 Speed | 10M/100M/1000M/2.5Gbps | | | | |

| | | |
|-------------------------------|---------------------------------------|--|
| 内部接口 Internal Connector | SATA | 2 x SATA3.0(6Gbps) |
| | USB 3.2 | 4 x USB 3.2(10Gbps) |
| | USB 2.0 | 8 x USB2.0(480Mbps) |
| | 串口 COM | 2 x COM |
| | GPIO | 8-bits GPIO |
| | 看门狗 Watch Dog | 65536 Level, 0~65535 sec |
| | 其他 Others | 1、 1 x LPC 2、 1 x SMBUS 3、 1 x SPI 4、 Smart Fan 2 Ports 5、 1 x I2C |
| | 拓展 Connector | 2 x COM-E 220Pin Connector |
| 电源 Power Requirements | 电源类型 Power Type | ATX: VCC,VSB AT: VCC |
| | 电源电压 Power input Voltage | Vin: 8.5V~20V(±5%) VSB: 5±5% RTC Battery: 2.0V~3.3V |
| | 连接器 Connector type | Power provided by Base board |
| 环境 Environment | 工作温度 Operating Temperature | 0~60°C |
| | 存储温度 Storage Temperature | 0~60°C |
| | 工作湿度 Operating Humidity | 40°C@95% Relative Humidity, Non-condensing |
| | 存储湿度 Storage Humidity | 60°C@95% Relative Humidity, Non-condensing |
| 物理特性 Physical | 尺寸 Dimensions | 95*95mm |
| | PCB 颜色 Color | Green |
| 操作系统 OS | Microsoft | Support |
| | Linux | Support |

2 Product Photos



深圳智锐通科技有限公司
Shenzhen ZRT Technology Co., Ltd



Official

&



Youtube

- Shenzhen ZRT Technology Co., Ltd
- Email: info@zrt-tech.com
- Tel.: +86-400-838-6869
+86-153-3876-2616
- Website: www.zrt-tech.com
- Address: Room 2105-2106, Building A, Fenghuang Zhigu, No. 50, Tiezai Road, Xixiang Street, Bao'an District, 518100, Shenzhen

2024版

Version 2024. All specifications are subject to change without prior notice. This information is for reference only, and the company reserves the right of interpretation.